

PLEATED BLIND FASTENING SYSTEMS



SIMPLY STICK - SIMPLY CLAMP

NEW

universal adhesive clamping shoe
for all standard pleated blind systems page 4

universal adhesive plate
for pleated blinds page 6

adhesive plate
for plissee system Cosiflor® page 8

adhesive plate
for plissee system Decomatic® page 10

adhesive plate
for plissee system EOS® page 12

universal adhesive bracket
for rounded or small window bars page 14

clamp bracket
for pleated and venetian blinds page 16

glider
for pleated and venetian blinds page 19

universal clamping shoe for gluing or screwing

- suitable for all standard pleated blind systems
- for adhesive mounting: Recommended max. pleated blind size 2 m²
- assembling on the glazing bead: Depth at least 13 mm

NEW



| article | article no. description | dispatch unit |
|---|---|--|
|  | 565 RKS universal clamping shoe Scope of delivery: <ul style="list-style-type: none"> • clamping shoe • cleaning tissue • self-adhesive film • fastening screws | 4 pieces in a bag - 100 pieces (= 25 bags) in a box |
|  | 565 KS universal clamping shoe Scope of delivery: <ul style="list-style-type: none"> • clamping shoe • self-adhesive film • fastening screws | 4 pieces in a bag - 100 pieces (= 25 bags) in a box |
|  | 565 S universal clamping shoe Scope of delivery: <ul style="list-style-type: none"> • clamping shoe • fastening screws | 4 pieces in a bag - 100 pieces (= 25 bags) in a box |
|  | 561 KLE self-adhesive film transparent | 100 pieces |
|  | 539 cleaning tissue removes adhesive rest solvent isopropanol | 5 pieces in a bag - 100 pieces in a box |

universal clamping shoe for gluing or screwing

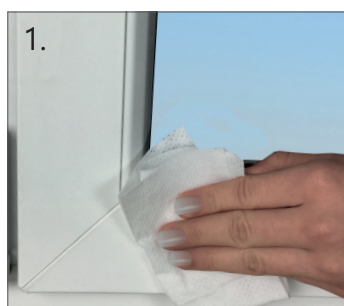
- suitable for all standard pleated blind systems
- for adhesive mounting: Recommended max. pleated blind size 2 m²
- assembling on the glazing bead: Depth at least 13 mm

NEW

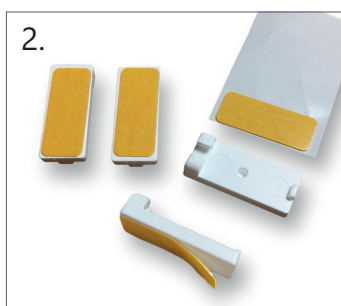


Important when using the adhesive films:

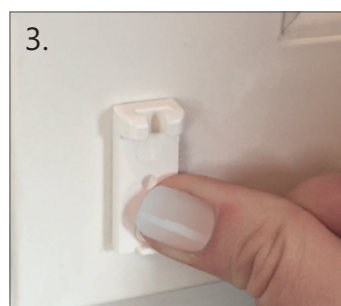
The double-sided adhesive films are usable for plastic and aluminium window frames which are not special coated, veined, uneven or rough. When using the adhesive films please make sure that the surfaces are dry and clean. They have to be free from e.g. grease, oil or silicone films, as well as dirt particles. **After using solvents, the cleaned surfaces must be allowed to air for at least 2 hours before they are covered.** If possible, do not touch any of the adhesive surfaces so that the adhesive strength is not reduced.



1.
Clean the window frame
(with the enclosed cleaning
tissue).



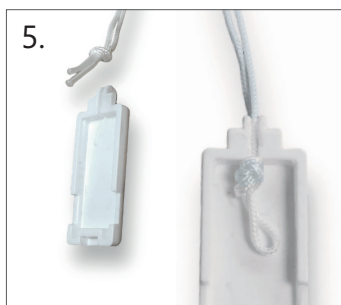
2.
Attach the double-sided ad-
hesive film to the lower parts
and press firmly.



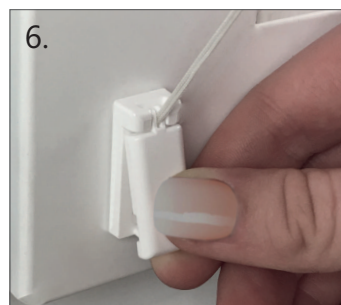
3.
Remove the yellow protective
film. Press firmly at the right
position for at least 20 seconds.



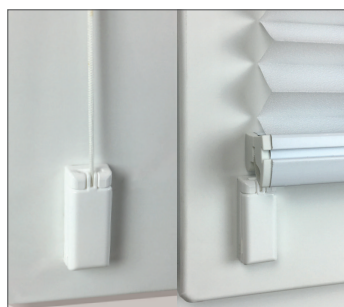
4.
Remove the existing carriers
from your pleated blind system
and knot the cord ends again*.



5.
Clamp the knotted cord ends
into the four caps of the
adhesive clamping shoes.



6.
Insert the caps with the cords
into the guide and clip them
in.



Adhesive clamping shoe
below



Adhesive clamping shoe
top








Variant: Adhesive clamping
shoe on the glazing bead
(depth at least 13 mm).

*For pleated blinds which are not made to measure, please also look at the enclosed instructions for shortening.

universal adhesive plate for pleated blinds for system **Cosiflor®** and **Decomatic®**

(max. size of the pleated blind 2m²)



| article | article no. description | dispatch unit |
|---|---|--|
|  | 561 UV universal adhesive plate for pleated blinds transparent Scope of delivery: <ul style="list-style-type: none"> • adhesive plate • self-adhesive film • screws and nuts for fastening the clamping shoes* | 4 pieces in a bag - 100 pieces (= 25 bags) in a box |
|  | SBB 561 UV universal adhesive plate for pleated blinds transparent <ul style="list-style-type: none"> • 4 pieces in a blister pack • Scope of delivery: <ul style="list-style-type: none"> • adhesive plate • self-adhesive film • screws and nuts for fastening the clamping shoes* |  4 pieces in a blister pack - 10 blister packs in a box |
|  | 561 KLE self-adhesive film transparent | 100 pieces |
|  | 539 cleaning tissue removes adhesive rest solvent isopropanol | 5 pieces in a bag - 100 pieces in a box |

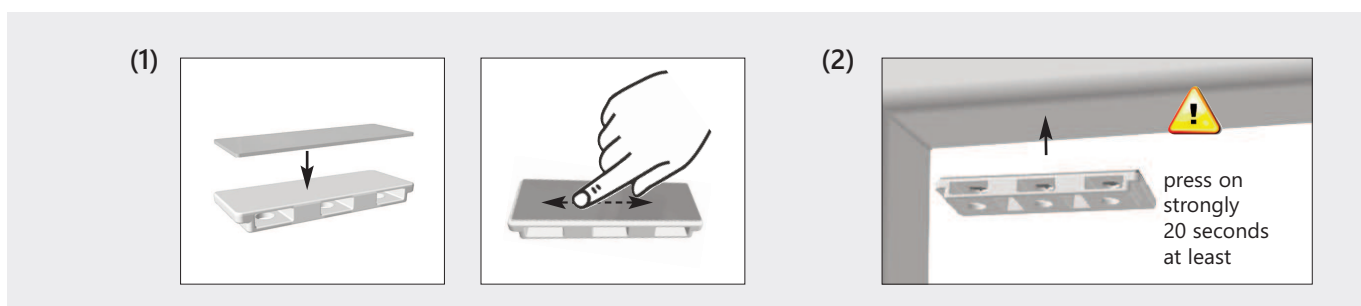
*clamping shoes are delivered with the pleated blind

universal adhesive plate for pleated blinds for system **Cosiflor®** and **Decomatic®**

(max. size of the pleated blind 2m²)

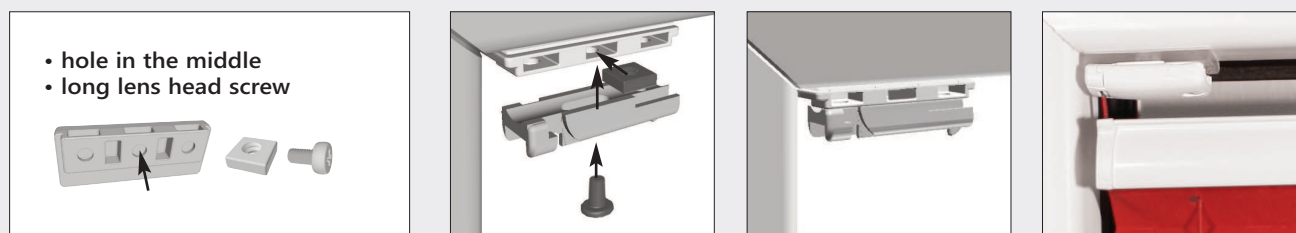


Glue plates for pleated blinds are usable for plastic and aluminium window frames which are not special coated, veined, uneven or rough (depth of the window bar at least 13 mm). When using the glue plates please make sure that the surfaces are dry and clean. They have to be free from e.g. grease, oil or silicone films, as well as dirt particles! (After using solvents the purified surfaces have to dry for at least 2 hours.)

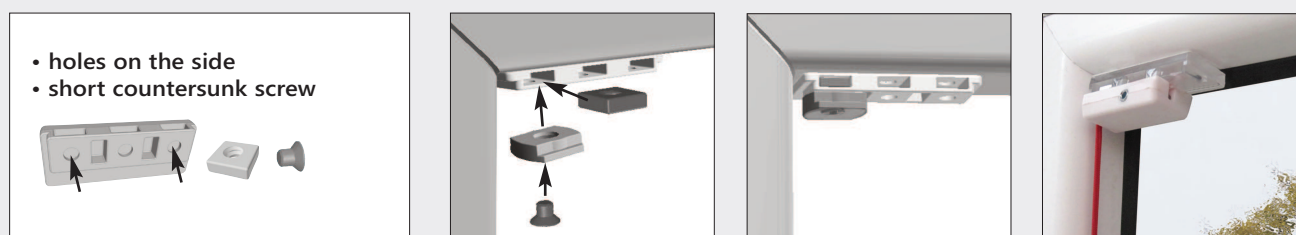


- (1) The enclosed adhesive film has to be take off from the carrier film. Put it on the adhesive plate (if possible do not touch the sticky side, not to reduce the adhesive force). Press strongly and rub over it several times!
- (2) Remove the protective film and press the adhesive plate on the marked position on the window bar 20 seconds at least (hole for the screw-nut must be in the front). Ideal temperature at 20°C, heat accelerates the adhesive process.

(3a) clamping shoe* system **COSIFLOR®**



(3b) clamping shoe* system **DECOMATIC®**



- (3) Insert the nut into the adhesive plate and mount the clamping shoe* on the plate. Make absolutely sure that the screw is not tightened too much, because the glueplate might be damaged!

adhesive plate for pleated blinds system Cosiflor®

(max. size of the pleated blind 2m²)



clamping Cosiflor®
new type



use article 570

clamping Cosiflor®
old type



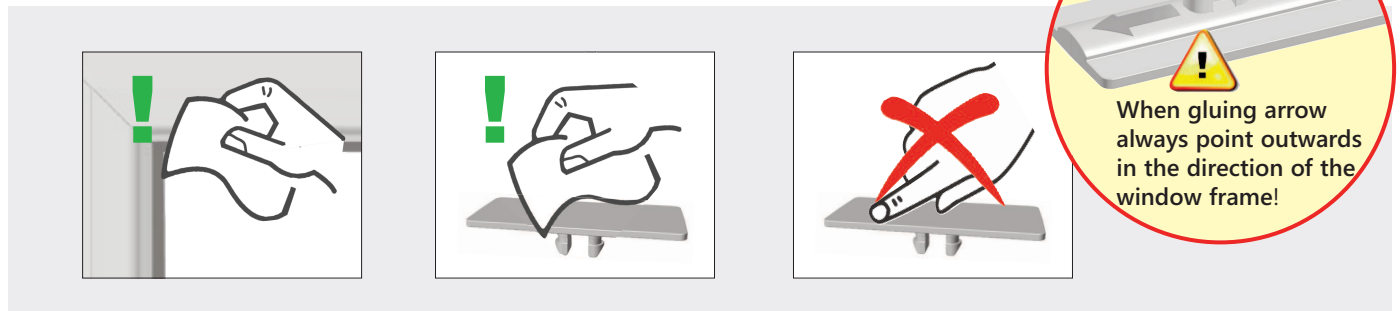
use article 567

| article | article no. description | dispatch unit |
|---|--|---|
|  | 570 adhesive plate for system Cosiflor® with clamping shoe new type transparent incl. self adhesive film | 4 pieces in a bag - 100 pieces (= 25 bags) in a box |
|  | SBB 570 adhesive plate for system Cosiflor® with clamping shoe new type transparent incl. self adhesive film • 4 pieces in a blister pack • |  4 pieces in a blister pack - 10 blister packs in a box |
|  | 567 adhesive plate for system Cosiflor® with clamping shoe old type transparent incl. self adhesive film | 4 pieces in a bag - 100 pieces (= 25 bags) in a box |
|  | SBB 567 adhesive plate for system Cosiflor® with clamping shoe old type transparent incl. self adhesive film • 4 pieces in a blister pack • |  4 pieces in a blister pack - 10 blister packs in a box |
|  | 561 KLE self-adhesive film transparent | 100 pieces |
|  | 539 cleaning tissue removes adhesive rest, solvent isopropanol | 5 pieces in a bag - 100 pieces in a box |

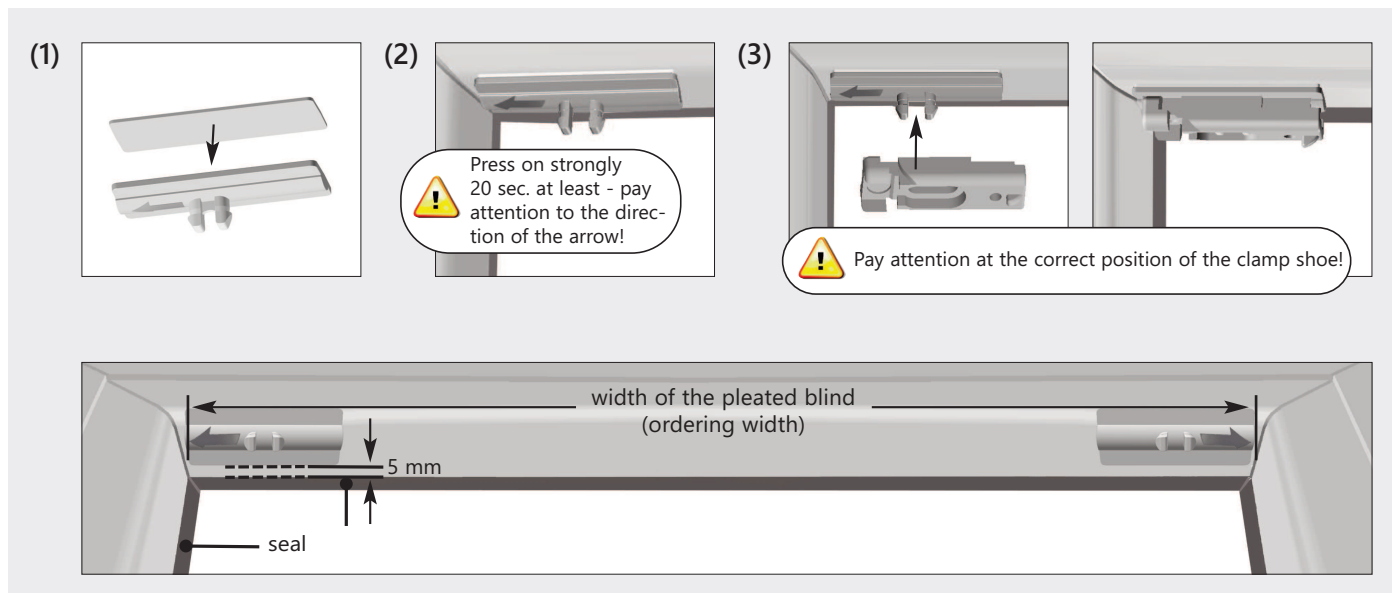
adhesive plate for pleated blinds system **Cosiflor®**

(max. size of the pleated blind 2m²)

nodeko
Nodeko is perfect®



Glue plates for pleated blinds are usable for plastic and aluminium window frames which are not special coated, veined, uneven or rough (depth of the window bar at least 13 mm). When using the glue plates please make sure that the surfaces are dry and clean. They have to be free from e.g. grease, oil or silicone films, as well as dirt particles! (After using solvents the purified surfaces have to dry for at least 2 hours.)



- (1) The enclosed adhesive film has to be take off from the carrier film. Put it on the adhesive plate (if possible do not touch the sticky side, not to reduce the adhesive force). Press strongly and rub over it several times!
- (2) Remove the protective film and press the adhesive plate on the marked position on the window bar 20 seconds at least. Make sure that the arrow on the adhesive plate points outwards to the window frame (see illustrations). Ideal temperature at 20°C, heat accelerates the adhesive process.
- (3) Clip the base part of the Cosiflor® clamping shoe* at the adhesive plate. **Pay attention at the correct position!**








(4) Mount the Cosiflor® pleated blind.

clamping shoes are delivered with the pleated blind.

adhesive plate for pleated blinds system **Decomatic®**

(max. size of the pleated blind 2m²)



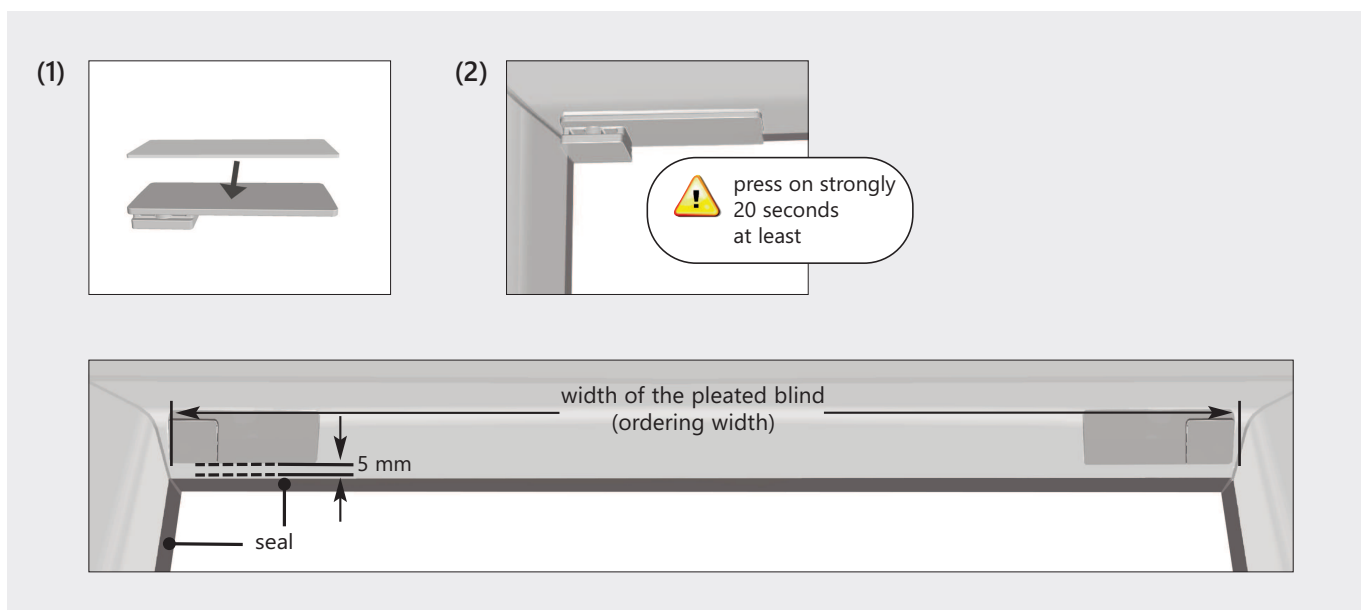
| article | article no. description | dispatch unit |
|---|---|--|
|  | 569 adhesive plate for system Decomatic® transparent incl. self adhesive film | 4 pieces in a bag - 100 pieces (= 25 bags) in a box |
|  | SBB 569 adhesive plate for system Decomatic® transparent incl. self adhesive film • 4 pieces in a blister pack • |  4 pieces in a blister pack - 10 blister packs in a box |
|  | 561 KLE self-adhesive film transparent | 100 pieces |
|  | 539 cleaning tissue removes adhesive rest solvent isopropanol | 5 pieces in a bag - 100 pieces in a box |

adhesive plate for pleated blinds system **Decomatic®**

(max. size of the pleated blind 2m²)



Glue plates for pleated blinds are usable for plastic and aluminium window frames which are not special coated, veined, uneven or rough (depth of the window bar at least 13 mm). When using the glue plates please make sure that the surfaces are dry and clean. They have to be free from e.g. grease, oil or silicone films, as well as dirt particles! (After using solvents the purified surfaces have to dry for at least 2 hours.)



- (1) The enclosed adhesive film has to be take off from the carrier film. Put it on the adhesive plate (if possible do not touch the sticky side, not to reduce the adhesive force). Press strongly and rub over it several times!
- (2) Remove the protective film and press the adhesive plate on the marked position on the window bar 20 seconds at least. Make sure that the arrow on the adhesive plate points outwards to the window frame (see illustrations). Ideal temperature at 20°C, heat accelerates the adhesive process



adhesive plate for pleated blinds system EOS®

(max. size of the pleated blind 2m²)



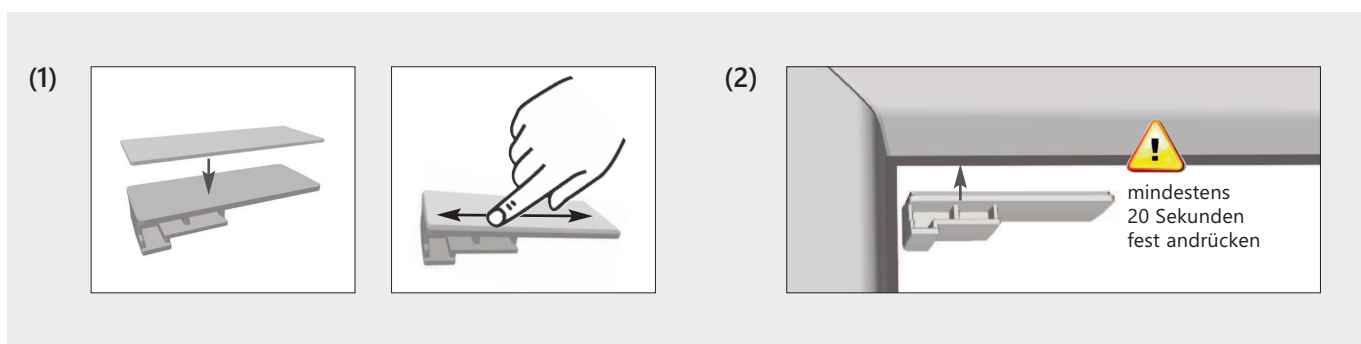
| article | article no. description | dispatch unit |
|---|---|---|
|  | 564 adhesive plate for system EOS® transparent incl. self adhesive film | 4 pieces in a bag - 100 pieces (= 25 bags) in a box |
|  | SBB 564 adhesive plate for system EOS® transparent incl. self adhesive film • 4 pieces in a blister pack • |  4 pieces in a blister pack - 10 blister packs in a box |
|  | 561 KLE self-adhesive film transparent | 100 pieces |
|  | 539 cleaning tissue removes adhesive rest solvent isopropanol | 5 pieces in a bag - 100 pieces in a box |

adhesive plate for pleated blinds system EOS®

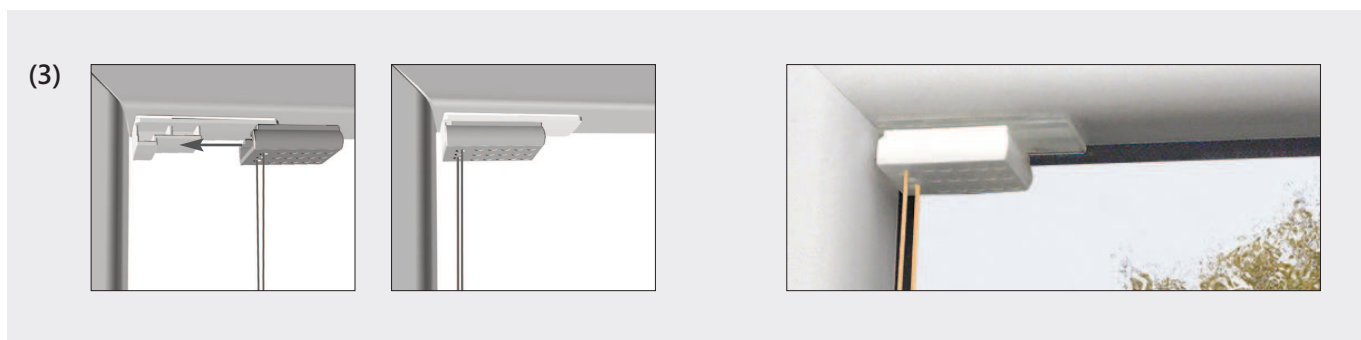
(max. size of the pleated blind 2m²)



Glue plates for pleated blinds are usable for plastic and aluminium window frames which are not special coated, veined, uneven or rough (depth of the window bar at least 13 mm). When using the glue plates please make sure that the surfaces are dry and clean. They have to be free from e.g. grease, oil or silicone films, as well as dirt particles! (After using solvents the purified surfaces have to dry for at least 2 hours.)



- (1) The enclosed adhesive film has to be take off from the carrier film. Put it on the adhesive plate (if possible do not touch the sticky side, not to reduce the adhesive force). Press strongly and rub over it several times!
- (2) Remove the protective film and press the adhesive plate on the marked position on the window bar 20 seconds at least. Make sure that the arrow on the adhesive plate points outwards to the window frame (see illustrations). Ideal temperature at 20°C, heat accelerates the adhesive process

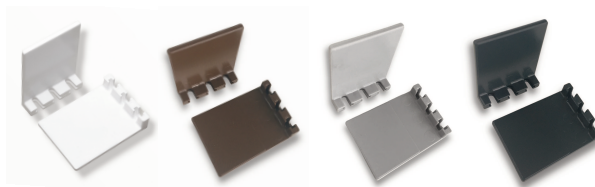





- (3) Mount the EOS® pleated blind.

universal adhesive plate for pleated blinds for system **Cosiflor®** and **Decomatic®**



Useable for rounded or small
window bars
e.g. at triple glazing.

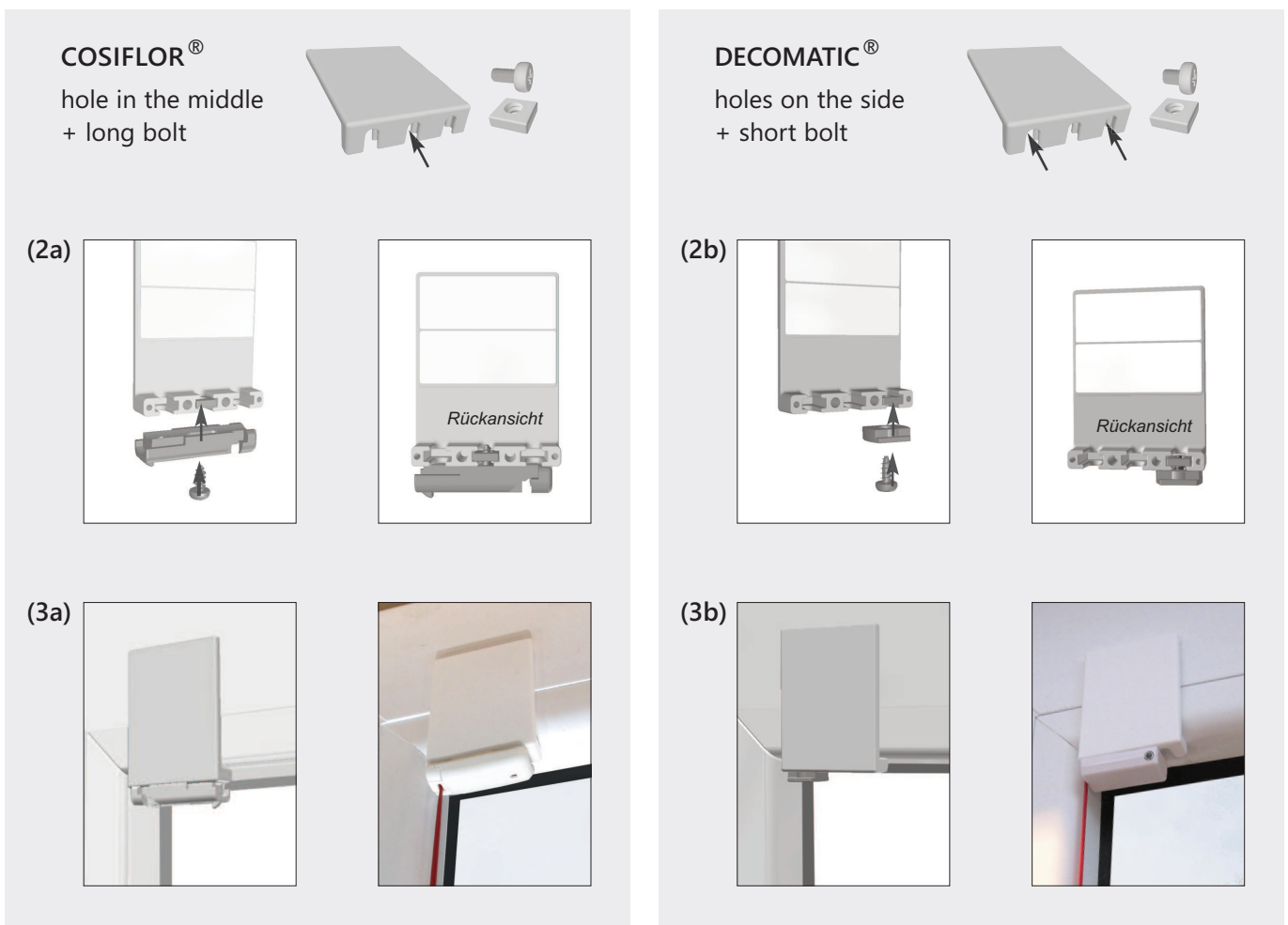
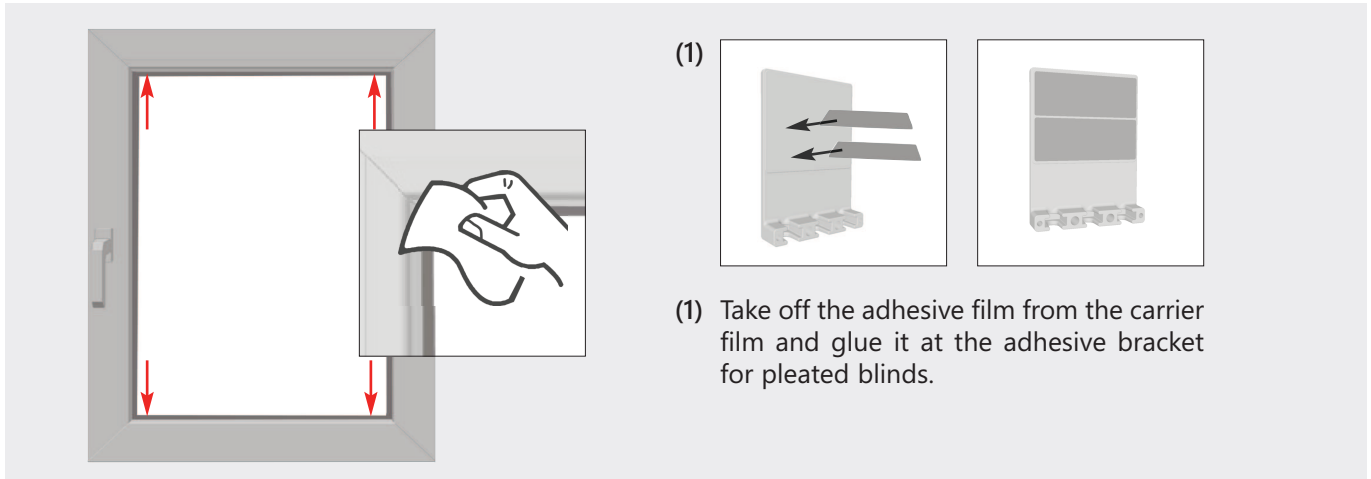


| article | article no. description | dispatch unit |
|---|---|--|
|  | 562 adhesive plate for pleated blinds self adhesive with screws and nuts for fastening the clamping shoes* col.-no. 1.00 white col.-no. 2.35 grey col.-no. 8.00 brown col.-no.14.19 anthracite | 4 pieces in a bag - 100 pieces (= 25 bags) in a box |
|  | SBB 562 adhesive plate for pleated blinds self adhesive • 4 pieces in a blister pack • with screws and nuts for fastening the clamping shoes* col.-no. 1.00 white col.-no. 2.35 grey col.-no. 8.00 brown col.-no.14.19 anthracite |  4 pieces in a blister pack - 10 blister packs in a box |
|  | 561 KLE self-adhesive film transparent | 100 pieces |
|  | 539 cleaning tissue removes adhesive rest solvent isopropanol | 5 pieces in a bag - 100 pieces in a box |

*clamping shoes are delivered with the pleated blind

universal adhesive plate for pleated blinds for system **Cosiflor®** and **Decomatic®**

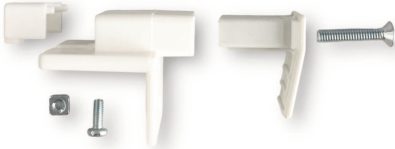
Adhesive brackets for pleated blinds are usable for plastic and aluminium window frames which are not special coated, veined, uneven or rough (depth of the window bar at least 13 mm). When using the glue plates please make sure that the surfaces are dry and clean. They have to be free from e.g. grease, oil or silicone films, as well as dirt particles! (After using solvents the purified surfaces have to dry for at least 2 hours.)






(2) Place the nut at the corresponding position. The position of the nut depends on the used pleated blind system. Then mount the base part of the clamp shoe* - note left and right ! Make sure that the screw is not tightened too much, because the bracket might be damaged!

(3) Attach the adhesive bracket at the window frame (note left and right). Press on strongly 20 seconds at least.

clamp bracket for system Cosiflor® and Decomatic®




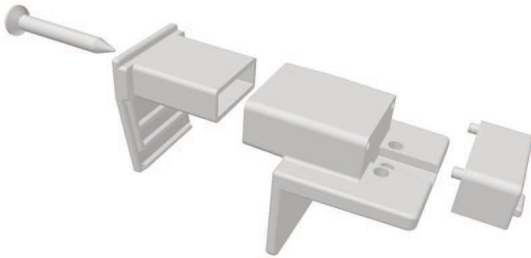
useable for pleated blinds
and venetian blinds

| article | article no. description | dispatch unit |
|---|--|---|
|  | <p>566</p> <p>clamp bracket, white for pleated blinds and venetian blinds</p> <p>with bolt and nut for fixing the clamping shoes*</p> | <p>4 pieces in a bag</p> <p>-</p> <p>100 pieces (= 25 bags) in a box</p> |
|  | <p>SBB 566</p> <p>clamp bracket, white for pleated blinds and venetian blinds</p> <p>• 4 pieces in a blister pack •</p> <p>with bolt and nut for fixing the clamping shoes*</p> |  <p>4 pieces in a blister pack</p> <p>-</p> <p>10 blister pack in a box</p> |

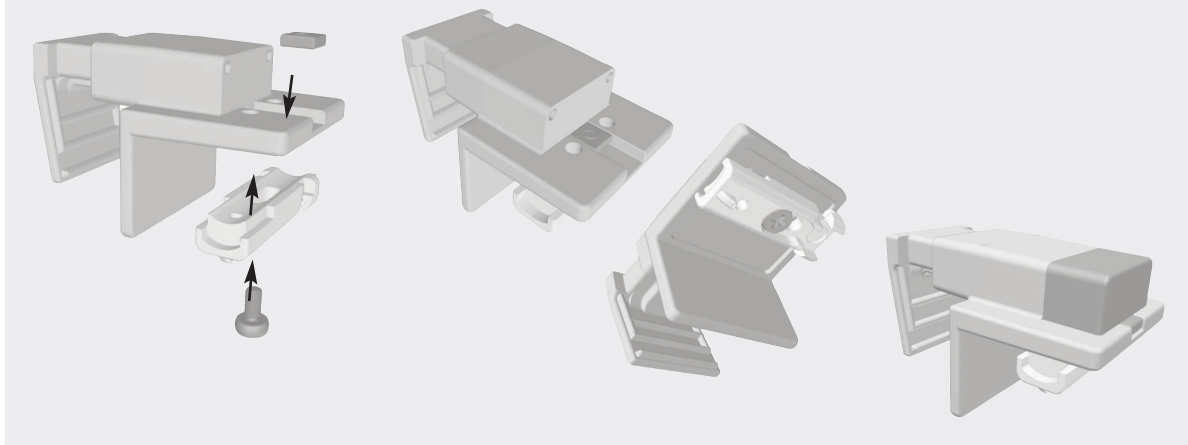
clamp bracket for system **Cosiflor®** and **Decomatic®**

Clamp brackets are suitable for a clamp range (width of profile of the window)
from 10 mm to 25 mm.

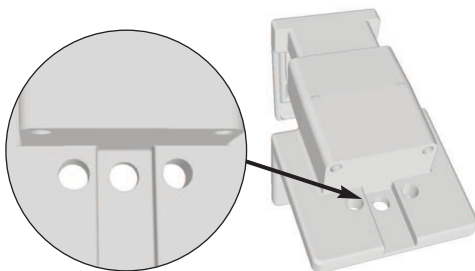
 Don't use an electric screwdriver!



mounting example system **COSIFLOR®**




hole in the middle for clamping shoes **COSIFLOR®**
holes on the side for clamping shoes **DECOMATIC®**



glider for pleated and venetian blinds



to move laterally in alu-rails and
alu-rail-rods with a run of 6 mm

| article | article no. description | dispatch unit |
|---|---|---|
|  | 20 GJ glider for pleated blinds and venetian blinds | 2 pieces in a bag - 20 pieces (= 10 bags) in a box |

